

Robin guarantees  
high performance;  
characteristic descended  
from SUBARU DNA.



## Robin EH engines

# EH series

09-2D

12-2D/B

17-2D/B

25-2D/B

30D/B

34D/B



Air cooled 4 cycle  
OHV Gasoline Engine

## SPECIFICATIONS

| Model                                      | EH12-2D  | EH12-2B                                    | EH17-2D                                    | EH17-2B                                    | EH25-2D                                    | EH25-2B                                    |
|--|--|--|--|--|--|--|
| Type                                       | Air-cooled, 4-cycle, single cylinder, horizontal PTO shaft, OHV, gasoline engine |  |  |  |  |  |
| Bore × Stroke mm(in.)                      | 60 × 43(2.36 × 1.57)   |  | 67 × 49(2.64 × 1.93)                       |  | 75 × 57(2.95 × 2.24)                       |  |
| Piston displacement ml(cu.in.)             | 121(7.38)  |  | 172(10.50)                                 |  | 251(15.31)                                 |  |
| Continuous output kW[PS](HP)/rpm           | 2.1[2.8](2.8)/3600<br>1.8[2.5](2.5)/3000   | 2.1[2.8](2.8)/1800<br>1.8[2.5](2.5)/1500   | 2.9[4.0](4.0)/3600<br>2.6[3.5](3.5)/3000   | 2.9[4.0](4.0)/1800<br>2.6[3.5](3.5)/1500   | 4.7[6.4](6.4)/3600<br>4.0[5.5](5.5)/3000   | 4.7[6.4](6.4)/1800<br>4.0[5.5](5.5)/1500   |
| Maximum output kW[PS](HP)/rpm              | 2.9[4.0](4.0)/4000   | 2.9[4.0](4.0)/2000                         | 4.4[6.0](6.0)/4000                         | 4.4[6.0](6.0)/2000                         | 6.3[8.5](8.5)/4000                         | 6.3[8.5](8.5)/2000                         |
| Maximum torque N·m[kgf·m](lb·ft)/rpm       | 7.5[0.76]<br>(5.53)/2600   | 14.9[1.52]<br>(10.99)/1300                 | 10.7[1.09]<br>(7.89)/2600                  | 21.4[2.18]<br>(15.78)/1300                 | 16.6[1.69]<br>(12.24)/2600                 | 33.1[3.38]<br>(24.41)/1300                 |
| Direction of rotation                      | Counter clockwise as viewed from PTO shaft side                                  |  |  |  |  |  |
| Fuel                                       | Automobile unleaded gasoline   |  |  |  |  |  |
| Fuel Tank capacity liter(us gal.)          | 3.6 (0.95)   |  |  |  | 6.0 (1.59)                                 |  |
| Lubricant                                  | Automobile oil SAE #20, #30, 10W-30, class SE or higher                          |  |  |  |  |  |
| Lubrication                                | Splash type  |  |  |  |  |  |
| Lubricating oil capacity liter(us gal.)    | 0.6 (0.16)   |  | 0.65 (0.17)                                |  | 1.0 (0.26)                                 |  |
| Carburetor                                 | Horizontal draft, float type   |  |  |  |  |  |
| Ignition system                            | Flywheel magneto (solid state)   |  |  |  |  |  |
| Starter                                    | Recoil starter (Electric starter as option)                                      |  |  |  |  |  |
| Spark Plug                                 | NGK B6ES   |  |  | NGK B6HS                                   |  |  |
| Governor                                   | Centrifugal flyweight type   |  |  |  |  |  |
| Type of Reduction                          | —  | 1/2gear type                               | —  | 1/2gear type                               | —  | 1/2gear type                               |
| Dry weight kg(lb)                          | 15 (33.1)  | 15.5 (34.2)                                | 16 (35.5)                                  | 16.5 (36.4)                                | 23 (50.7)                                  | 24 (52.9)                                  |
| Dimensions length × width × height mm(in.) | 297 × 333 × 366<br>(11.69 × 13.11 × 14.41)                                       | 299 × 333 × 366<br>(11.77 × 13.11 × 14.41) | 298 × 333 × 383<br>(11.73 × 13.11 × 15.08) | 300 × 333 × 383<br>(11.81 × 13.11 × 15.08) | 332 × 380 × 442<br>(13.07 × 14.96 × 17.40) | 333 × 380 × 442<br>(13.11 × 14.96 × 17.40) |

| Model                                      | EH30D  | EH30B                                    | EH34D                                    | EH34B                                    | EH09-2D                                   |
|--|--|--|--|--|---|
| Type                                       | Air-cooled, 4-cycle, single cylinder, horizontal PTO shaft, OHV, gasoline engine |  |  |  |   |
| Bore × Stroke mm(in.)                      | 78 × 61(3.07 × 2.40)   |  | 84 × 61(3.31 × 2.40)                     |  | 51 × 42(2.01 × 1.65)                      |
| Piston displacement ml(cu.in.)             | 291(17.16)   |  | 338(20.63)                               |  | 86(5.24)                                  |
| Continuous output kW[PS](HP)/rpm           | 5.1[7.0](7.0)/3600<br>4.4[6.0](6.0)/3000   | 5.1[7.0](7.0)/1800<br>4.4[6.0](6.0)/1500 | 5.9[8.0](8.0)/3600<br>5.1[7.0](7.0)/3000 | 5.9[8.0](8.0)/1800<br>5.1[7.0](7.0)/1500 | 1.5[2.0](2.0)/3600                        |
| Maximum output kW[PS](HP)/rpm              | 6.6[9.0](9.0)/3600   | 7.4[10.0](10.0)/2000                     | 8.1[11.0](11.0)/3600                     | 8.8[12.0](12.0)/2000                     | 2.1[2.9](2.9)/4200                        |
| Maximum torque N·m[kgf·m](lb·ft)/rpm       | 19.1[1.95]<br>(14.09)/2500   | 38.2[3.90]<br>(28.17)/1250               | 23.6[2.41]<br>(17.41)/2500               | 47.3[4.82]<br>(34.89)/1250               | 4.9[0.5]<br>(3.61)/3600                   |
| Direction of rotation                      | Counter clockwise as viewed from PTO shaft side                                  |  |  |  |   |
| Fuel                                       | Automobile unleaded gasoline   |  |  |  |   |
| Fuel Tank capacity liter(us gal.)          | 6.0 (1.59)   |  |  |  | 1.5 (0.4)                                 |
| Lubricant                                  | Automobile oil SAE #20, #30, 10W-30, class SE or higher                          |  |  |  |   |
| Lubrication                                | Splash type  |  |  |  |   |
| Lubricating oil capacity liter(us gal.)    | 1.2 (0.32)   |  |  |  | 0.3 (0.079)                               |
| Carburetor                                 | Horizontal draft, float type   |  |  |  |   |
| Ignition system                            | Flywheel magneto (solid state)   |  |  |  |   |
| Starter                                    | Recoil starter (Electric starter as option)                                      |  |  |  | Recoil starter                            |
| Spark Plug                                 | NGK B6ES   |  |  |  | NGK BMR4A                                 |
| Governor                                   | Centrifugal flyweight type   |  |  |  |   |
| Type of Reduction                          | —  | 1/2gear type                             | —  | 1/2gear type                             | —   |
| Dry weight kg(lb)                          | 30 (66.1)  | 31 (68.3)                                | 30 (66.1)                                | 31 (68.3)                                | 9.9 (21.8)                                |
| Dimensions length × width × height mm(in.) | 377 × 421 × 485 (14.84 × 16.57 × 19.09)  |  |  |  | 249 × 299 × 380<br>(9.80 × 11.77 × 14.96) |

Specifications are subject to change without notice.

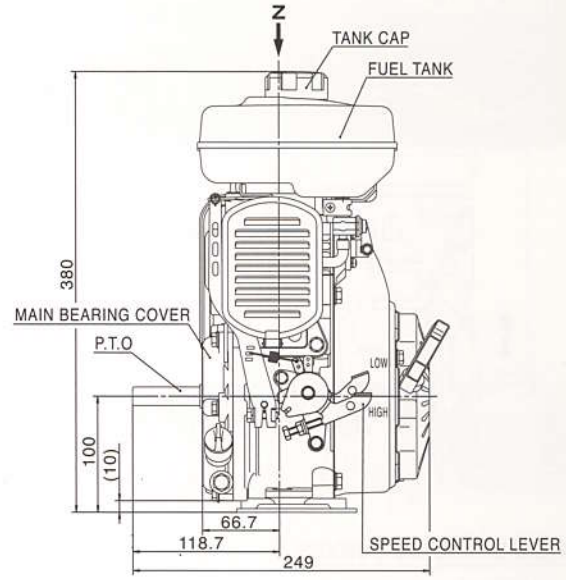
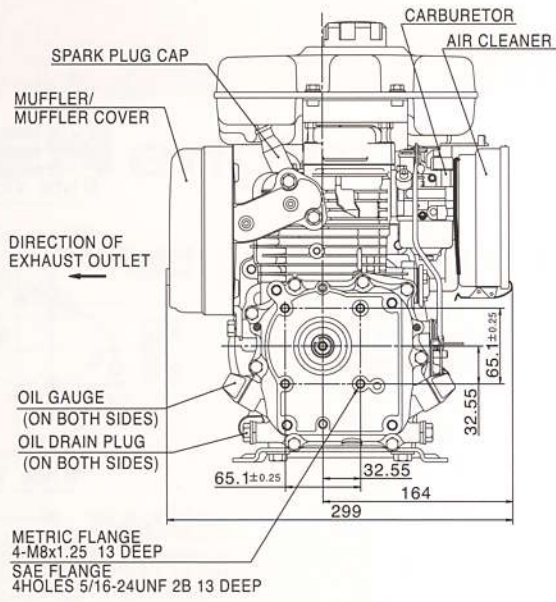


**FUJI HEAVY INDUSTRIES LTD.**  
INDUSTRIAL PRODUCTS COMPANY

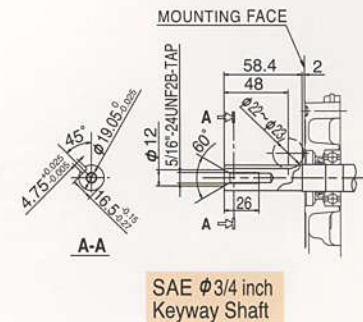
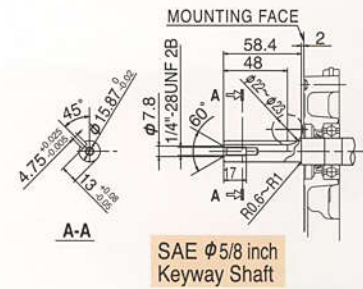
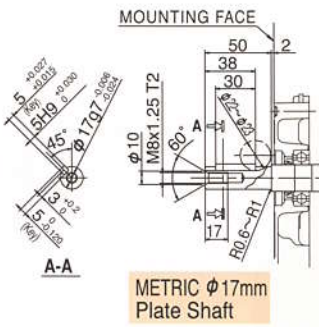
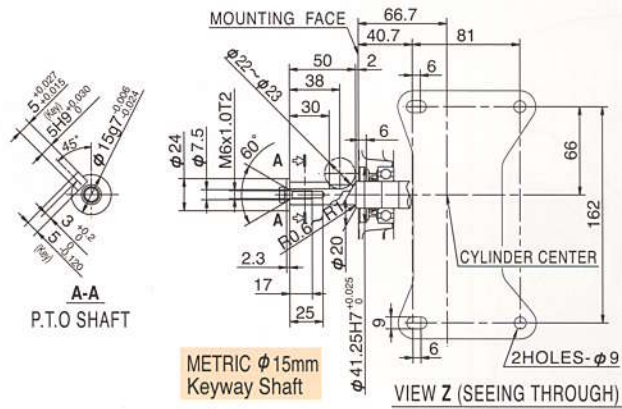
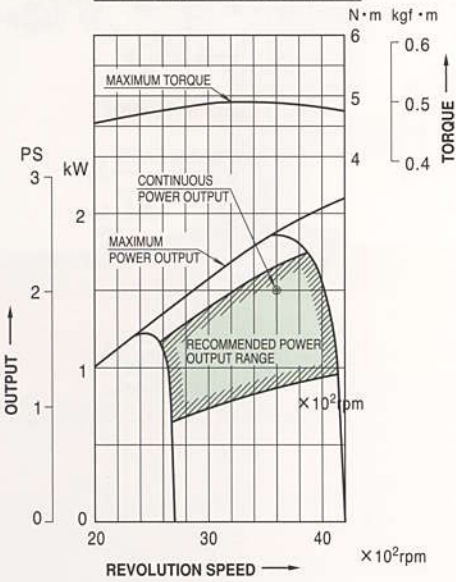
4-410 ASahi, KITAMOTO-SHI, SAITAMA, 364-8511, JAPAN  
TEL: +81-48-593-7798, FAX: +81-48-593-7946  
<http://www.fhi.co.jp/robin/>



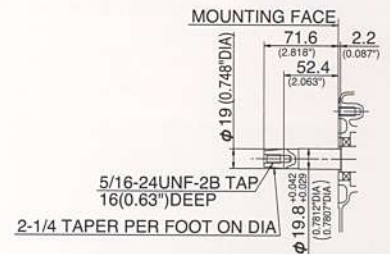
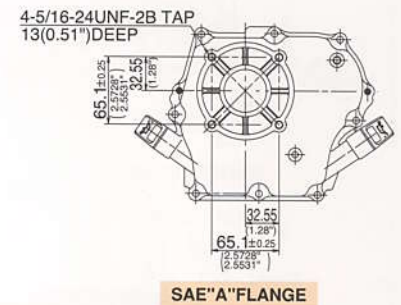
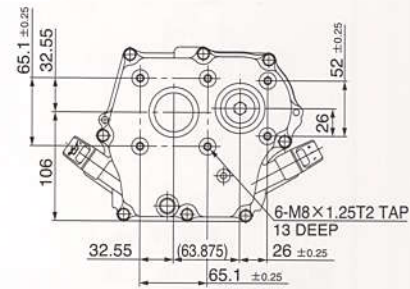
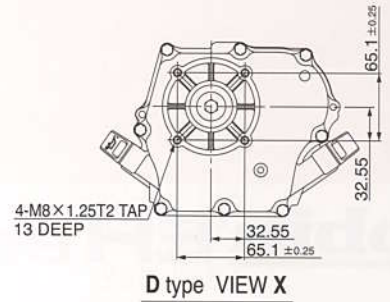
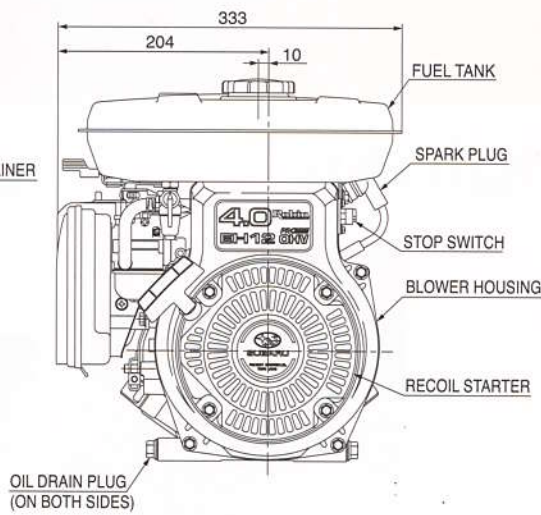
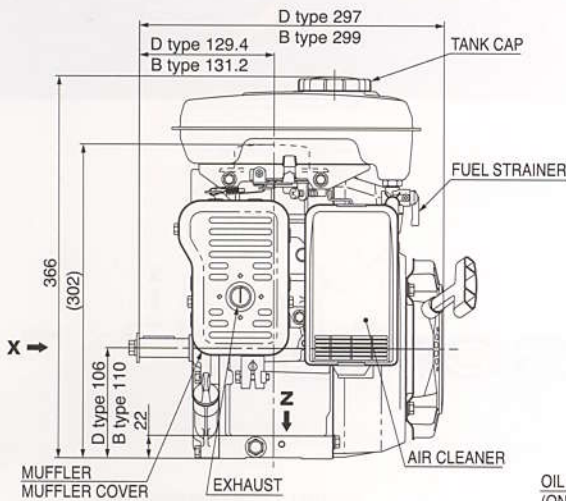
# EH09-2D



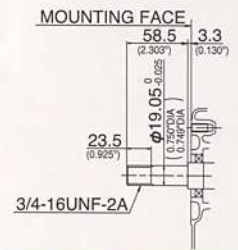
## PERFORMANCE CURVES



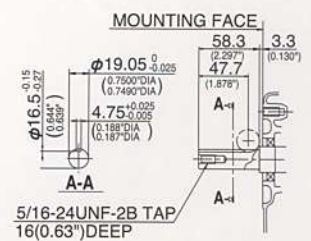
# EH12-2D/13-2B



GENERATOR SHAFT EXTENSION (DH)

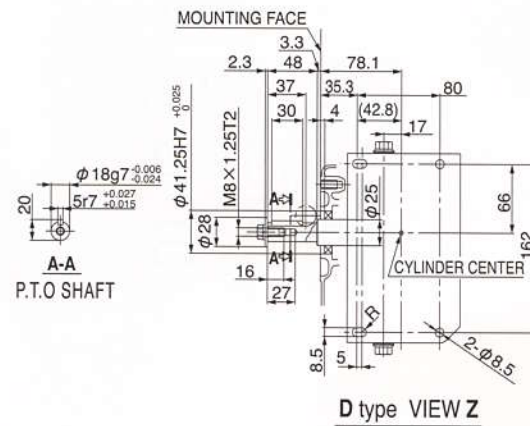
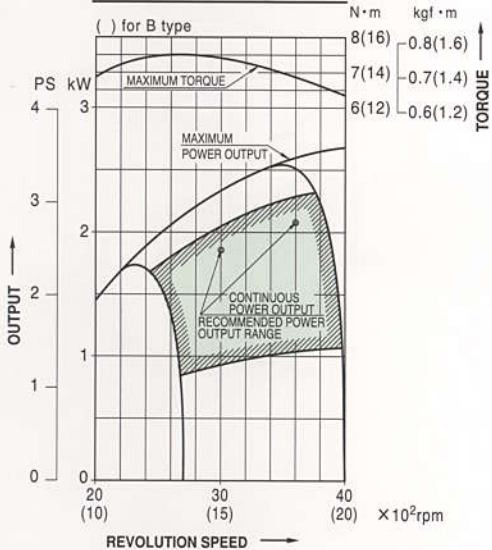


PUMP SHAFT EXTENSION (DP)

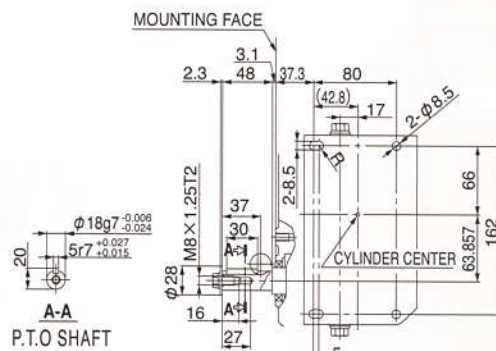


KEYWAY SHAFT SAE STD (DU)

## PERFORMANCE CURVES



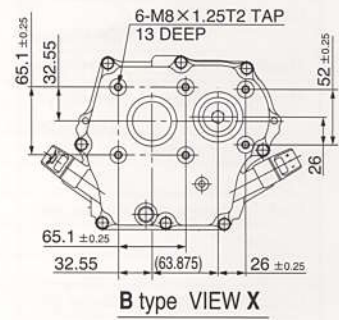
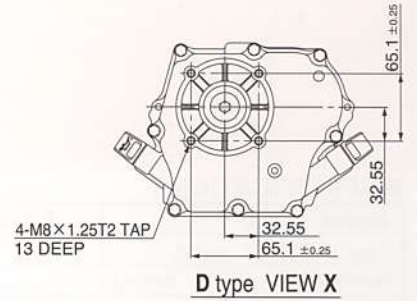
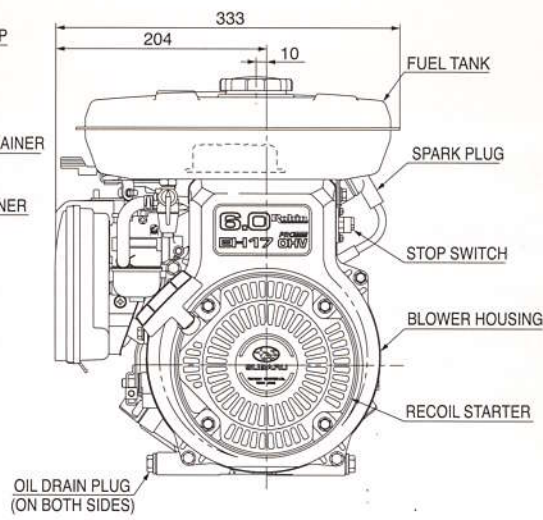
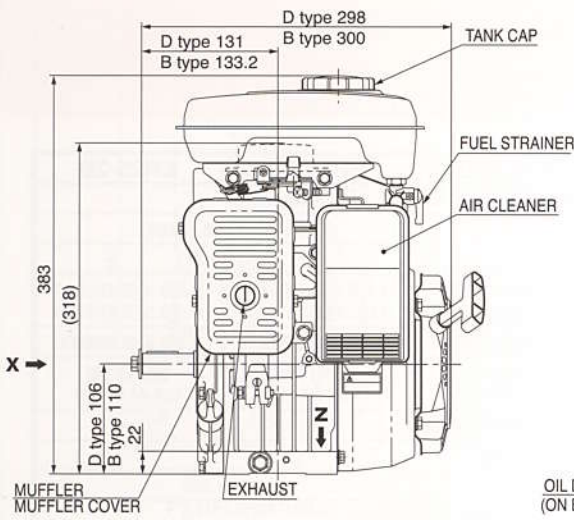
D type VIEW Z



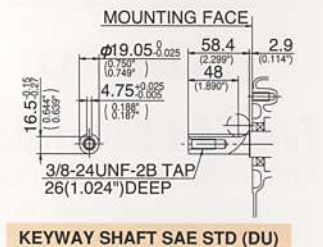
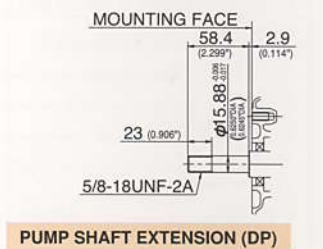
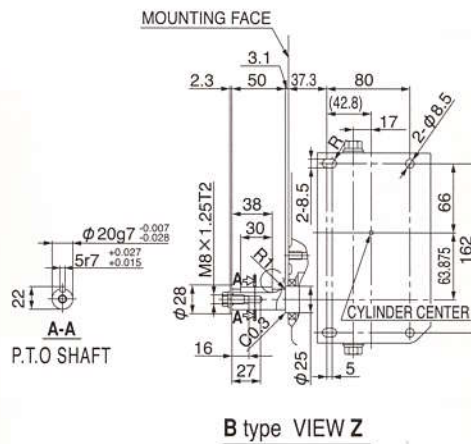
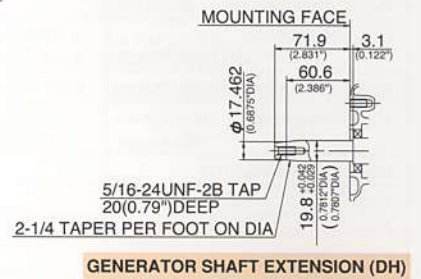
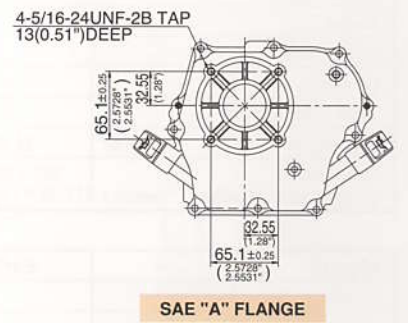
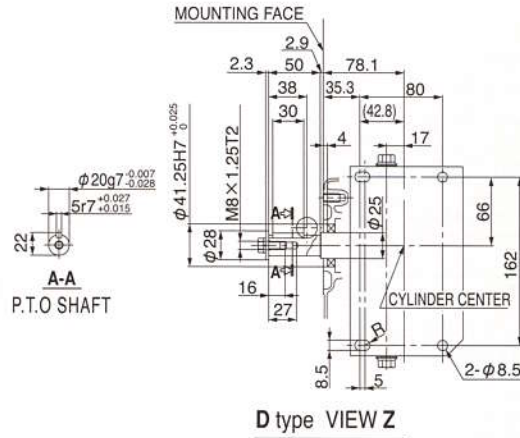
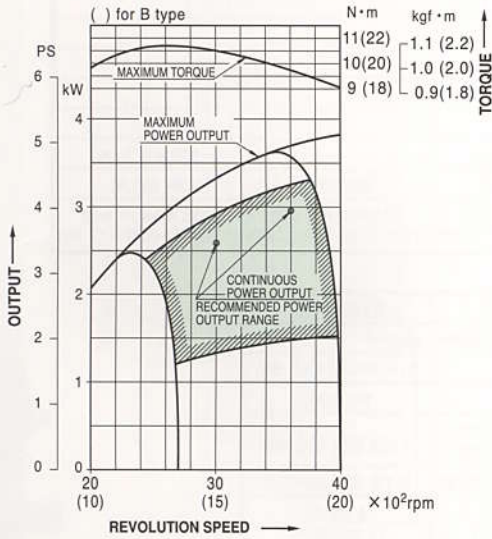
B type VIEW Z



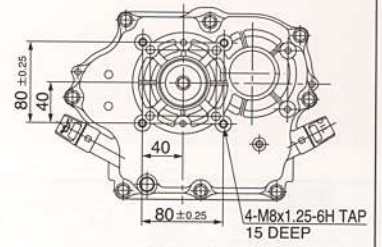
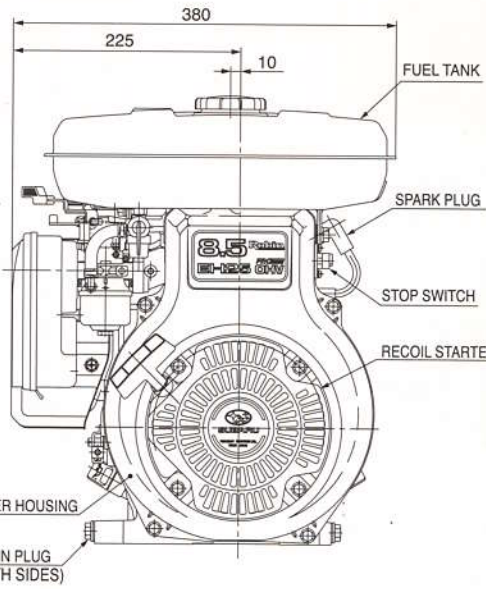
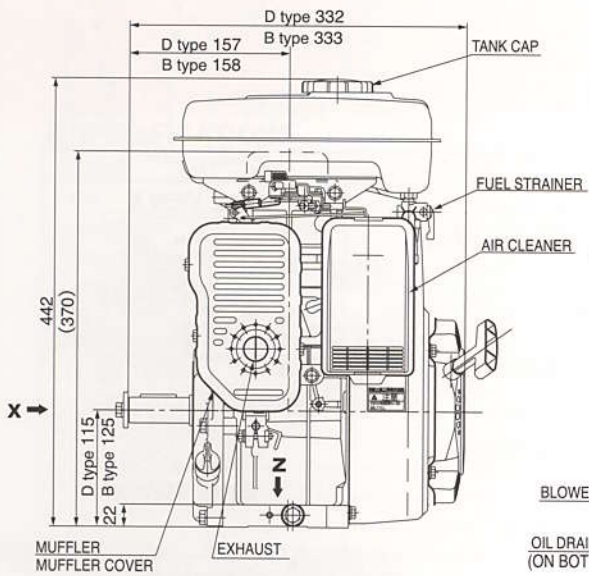
# EH17-2D/17-2B



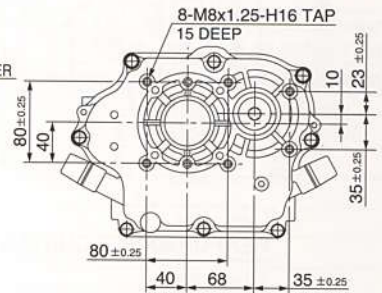
## PERFORMANCE CURVES



# EH25-2D/25-2B

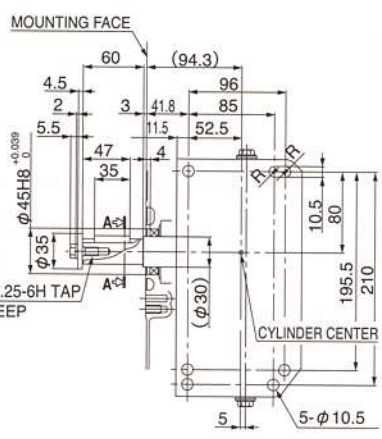
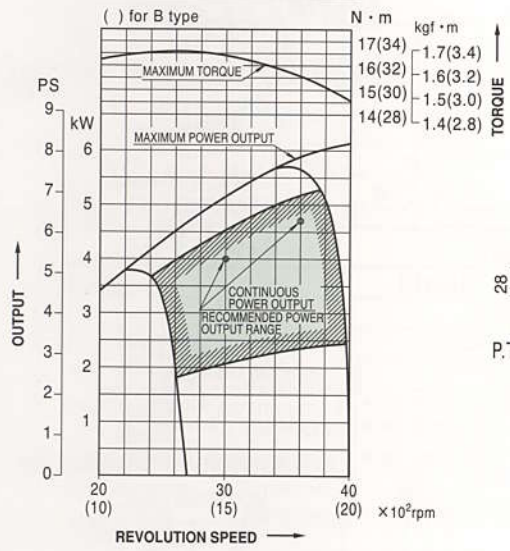


D type VIEW X

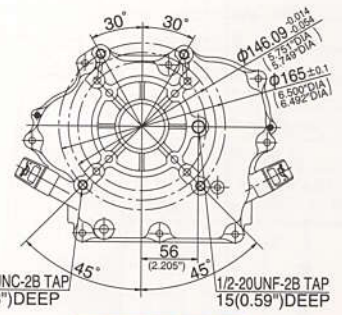


B type VIEW X

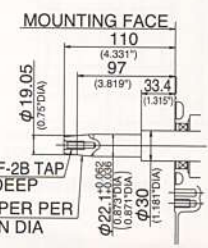
## PERFORMANCE CURVES



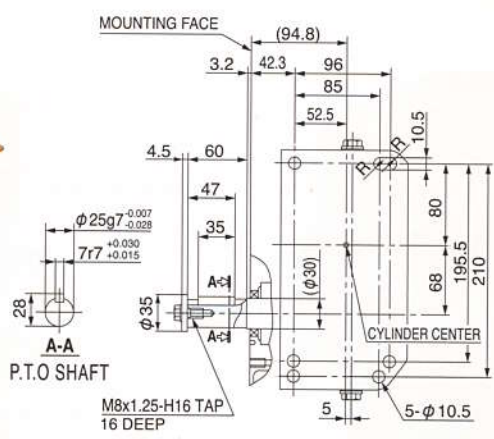
D type VIEW Z



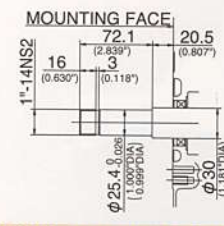
SAE "B" FLANGE



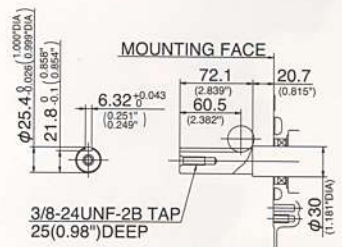
GENERATOR SHAFT EXTENSION (DH)



B type VIEW Z



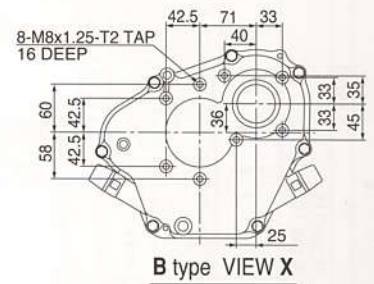
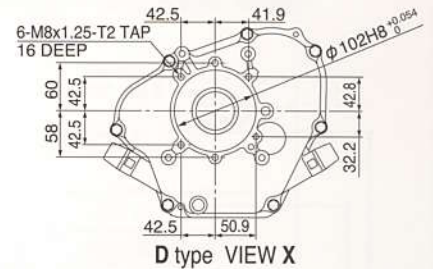
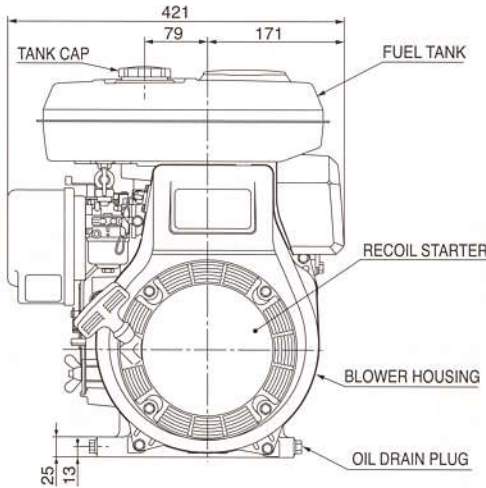
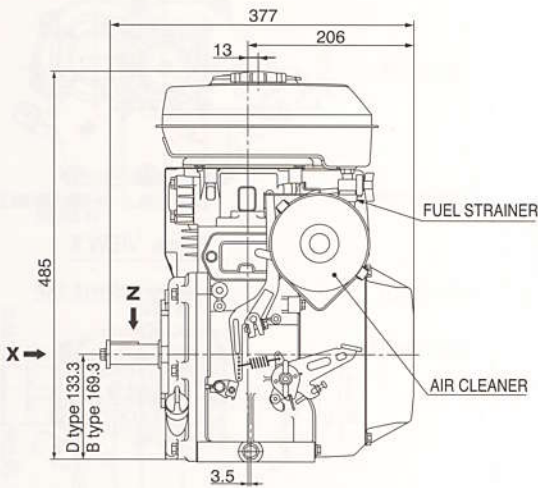
PUMP SHAFT EXTENSION (DP)



KEYWAY SHAFT SAE STD (DU)



# EH34D/34B



## PERFORMANCE CURVES

